



## NCCCP Pilot Program

H.A. Zaren, MD, FACS

Medical Director & Principal Investigator for the NCCCP Pilot Program at Nancy N. and J.C. Lewis Cancer & Research Pavilion

Professor, Surgical Oncology, at the University of Illinois at Chicago



SELECTED A NATIONAL  
CANCER INSTITUTE COMMUNITY  
CANCER CENTER PILOT PROGRAM.

## **NCCCP Collaborators:**

- **Georgia Cancer Coalition**
- **GaCORE**
- **Medical College of Georgia**
- **H. Lee Moffitt Cancer Institute**
- **Medical University of South Carolina**
- **Harbin Clinic, Rome, Georgia**
- **John B. Amos Cancer Center, The Medical Center, Columbus, Georgia**
- **Emory Winship Cancer Institute, Atlanta**



- **LCRP NCCCP site leads**
- **Beverly Albury, Information Technology**
- **Melissa Allen, Communication**
- **Jennifer Fournier, Clinical Trials**
- **Deborah Kemp, Survivorship/Palliative Care**
- **Judy Miller, Biospecimens**
- **Stephanie Smith, Clinical Trials**
- **Karen Terry, Quality of Care**



Site investigators:

Medical Oncology:

- Ayer Bala, M.D.
  - Ronald F. Goldberg, M.D
  - Chris Haberman, M.D
  - Harvey C. Lebos, M.D
  - Grant Lewis, M.D
  - Barry Luskey, M.D
  - O. George Negrea, M.D
  
  - Lester E. Robertson, M.D.
  
  - Mark Taylor, M.D.
  
  - Jennifer Yannucci, M.D.
- Radiation oncology
- Lorraine Champion, M.D.

Surgeons

- Brian Bailey, M.D.
- Buffi Boyd, M.D.
- John Coursey, M.D.
- Fred Daniel, M.D.
- Robert Johnson, M.D.
- Jeffrey Mandel, M.D.
- Susan Mahaney, M.D.
- Charles Usher, M.D.
- Stephen Yeager, M.D.
- H.A. Zaren, M.D., FACS

Pulmonary:

- Anthony Costrini, M.D.
- J. Allen Meadows III, M.D.
- Doug Mullins, M.D.

GI:

- Nick Costrini, M.D.



Executive Director:

- Nancy Johnson, MSM

Staff

- Aliffi, Kristi, Navigator
- Bailey, Kate, Survivorship
- Coleman, Dana, Navigator
- Daniels, Shonda, Clin Init
- Davis, Tonja, Research
- Ferrelle, Nancy, Registry
- Gordon, Patricia, Navigator
- Griffey, Melissa, Dietician
- Jones, Wanda, Navigator
- Mahaney, Jaime, Registry
- Miller, Judy, Biospecimens

- Rahal, Brenda, MultiD
- Shakya, Anita, Registry
- Spruill, Julia, Research
- Thompson, Marcia, SW
- Warren, Christina, Clin Init
- Willmann, Pat, Research

# NCI CCOP History

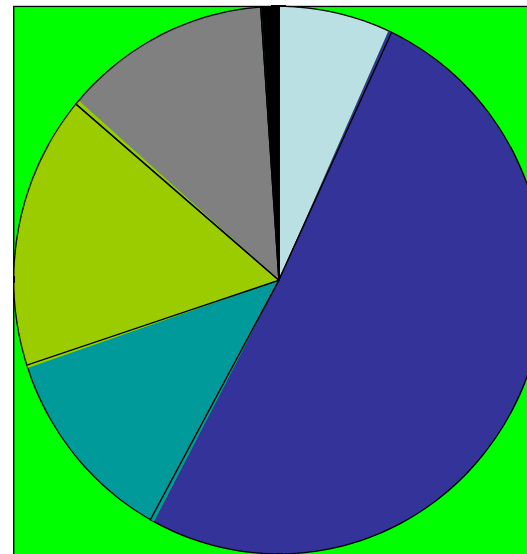
- Since its inception in 1983, the Community Clinical Oncology Program (CCOP) has linked community cancer specialists, primary care physicians, and other health care professionals to the NCI-supported Cooperative Groups and Cancer Centers to conduct NCI-approved cancer treatment, prevention, and control clinical trials
- The groups responsible for developing and implementing cancer prevention and control clinical trials are known as Research Bases: 14 Cooperative Groups and Cancer Centers have grants to serve as CCOP Research Bases

# NCI CCOP History

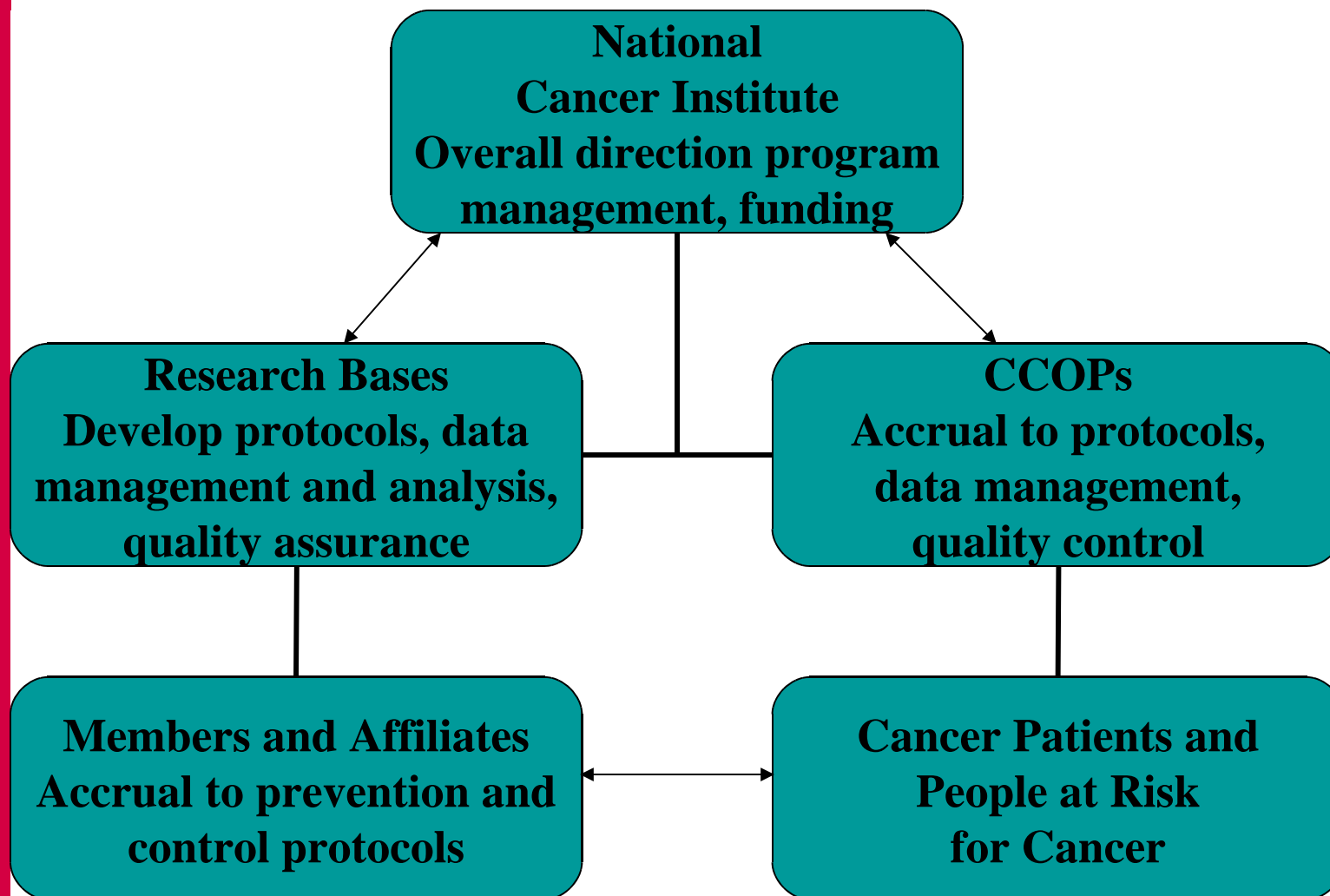
- In 2005, 50 CCOPs and 13 Minority-Based CCOPs across the country received funding for participation in NCI-approved trials.
- CCOP Cancer Control Trials since 1987  
241 cancer control trials, 136 symptom management trials.
- The CCOP network is the primary mechanism for conducting phase III clinical trials in symptom management, palliative care, and other cancer control issues.

# Medical Specialties in CCOPS

- Medical Oncologists/Hematologists 51%
- Radiation Oncologists 16%
- Primary Care 12%
- Surgeons 13%
- Urologists 7%
- All Others 1%



# CCOP Organizational Relationships



# NCCCP Background

- The NCI Community Cancer Centers Program (NCCCP) is a three-year pilot program to test the concept of a national network of community cancer centers to expand cancer research and deliver the latest, most advanced cancer care to a greater number of Americans in the communities in which they live .
- The pilot program is designed to encourage the collaboration of private-practice medical, surgical, and radiation oncologists, with close links to NCI research and to the network of 63 NCI-designated Cancer Centers principally based at large research universities

# **NCI Community Cancer Centers Program (NCCCP)**

## **Mission:**

**Enable the provision of state-of-the-art multispecialty care and early-phase clinical trials in community-based locations to meet the needs of the people.**

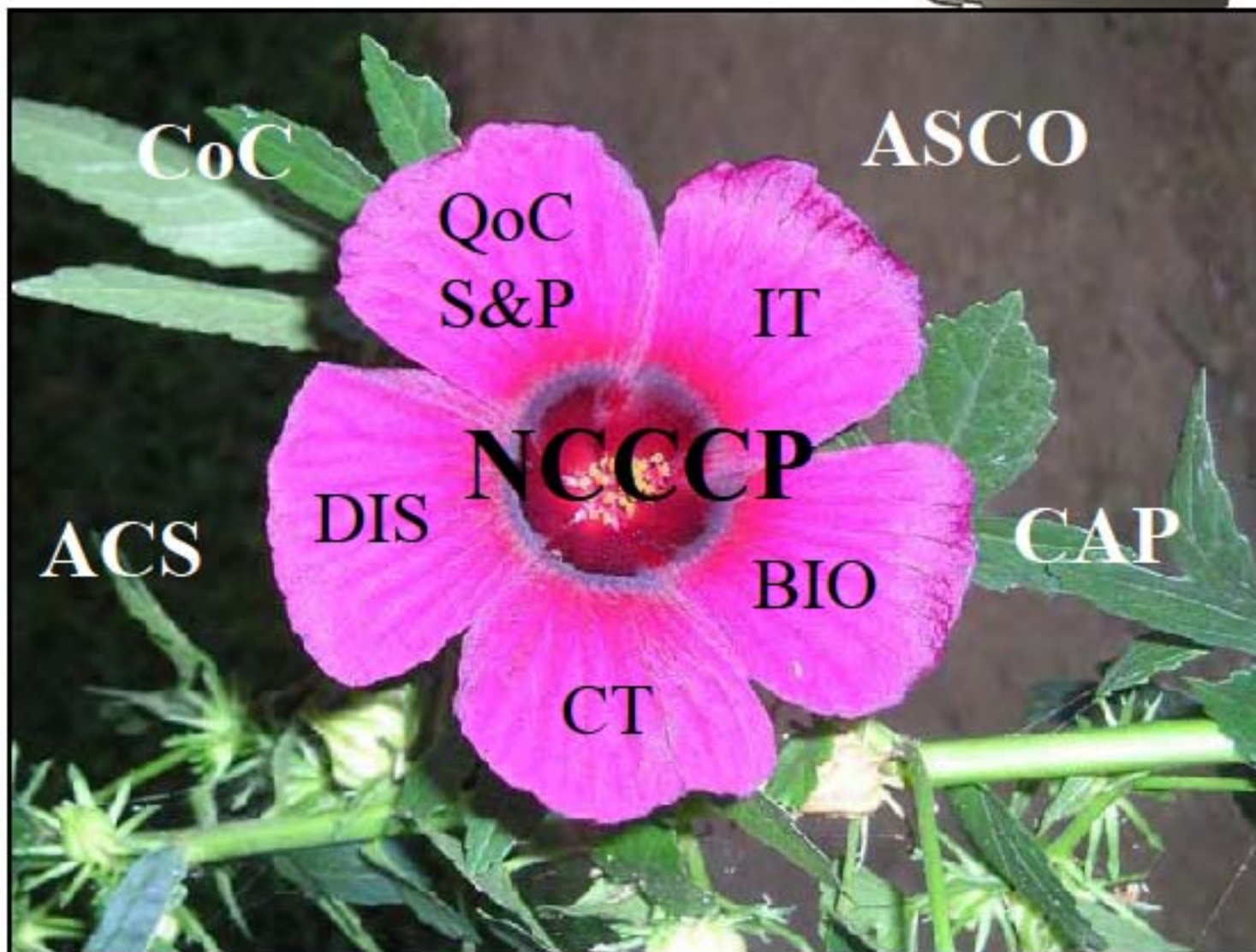
## **Goals:**

- Draw more patients into clinical trials in community-based settings**
- Reduce cancer healthcare disparities**
- Explore standards for collecting and storing cancer research specimens**
- Link to national computer networks for conducting research and sharing results**

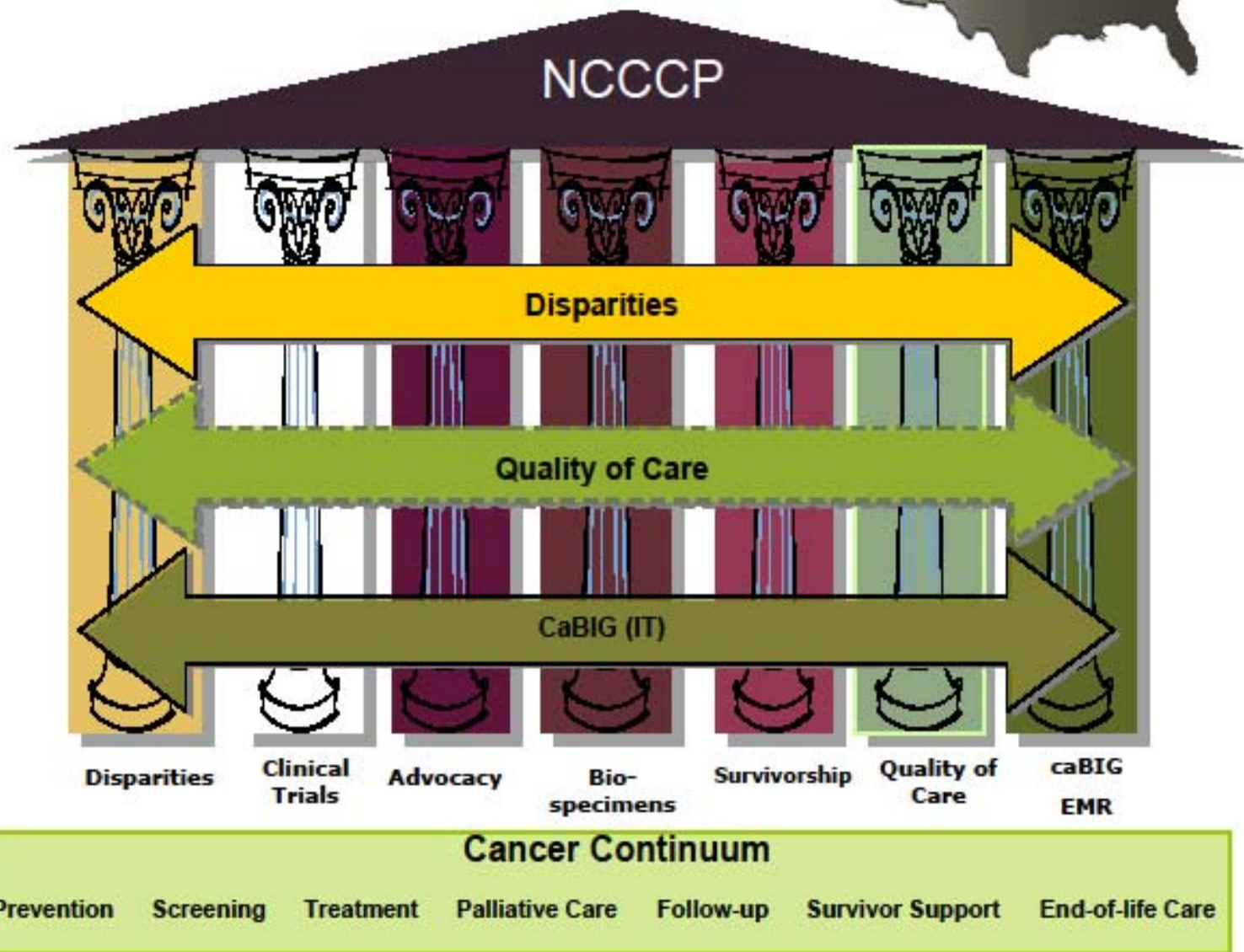
# 10 Organizations Selected in 2007



# NCCCP Network and National Linkages



# NCCCP's Core Components Address the Full Cancer Continuum



## **NCCCP Sites reported Achievements Expanding Outreach and Collaborations for Disparities**

- **56% of NCCCP sites increased outreach staff**
- **LCRP increased outreach staff by training and graduating 13 community health advisors.**
- **LCRP added an African American lay navigator.**
- **LCRP developed relationship with local Hispanic Nurses Association**

## **NCCCP Sites reported Achievements Expanding Outreach and Collaborations for Disparities**

- **75% of NCCCP sites increase community partners**
- **LCRP increased community partners**
- **Collaborative project NAVIGATE (Navigation to Increase Guidance and Awareness of Trials for Thoracic and Esophageal Cancers) with Hollings Cancer Center (HCC) at the Medical University of South Carolina, Gibbs Cancer Center (GCC) at Spartanburg, South Carolina**

## **NAVIGATE (Navigation to Increase Guidance and Awareness of Trials for Thoracic and Esophageal Cancers)**

- **Collaboration project: LCRP, MUSC, Spartanburg.**
- **Using the experience of current lay patient navigation programs and strength of each institution's clinical trial program infrastructure, NAVIGATE will focus on elucidating specific barriers experienced by thoracic and esophageal cancer patients.**
- **The pilot project's ultimate goal will be to evaluate if this addition will positively impact trial enrollment, protocol compliance and completion of treatment, particularly among uninsured, underrepresented, and disadvantaged populations**

## **NCCCP Site reported Achievements Expanding Outreach and Collaborations for Disparities**

- **88 % of NCCCP sites established community advisory committees**
- **LCRP established Community Health Advisors program**
- **LCRP launched a personalized URL program within St. John's Baptist Church (African American). The PURL provides a web-site through St. Joseph's/Candler that is tailored to each individual. Close to 300 members of St. John's church are participating in this effort**

## **NCCCP Sites reported Achievements Expanding Outreach and Collaborations for Disparities**

- **56 % of NCCCP increased participation in community events**
- **LCRP partnered with Savannah Morning News and Comcast to raise breast cancer awareness through a month long campaign called “Paint the Town Pink”.**
- **The Leukemia & Lymphoma Society regional director met with the LCRP Executive Director to develop a early intervention program for patients. The concept is being presented to the directors of the Leukemia & Lymphoma Society**

## **NCCCP Sites reported Achievements Expanding Survivorship and Palliative Care**

- **69 % of NCCCP sites offered new survivorship programs**
- **LCRP piloted a survivorship program: a six week course covering topics from the book, Picking Up the Pieces, which was written by two cancer survivors. The course is designed to repeat every 6-8 weeks**
- **LCRP hired a nurse practitioner to establish and run a survivorship clinic.**

## **NCCCP Sites reported Achievements Biospecimens**

- **NCCCP goal to Collect, store, and share blood and tissue samples needed for research.**
- **LCRP is a participant in a statewide biospecimens initiative with the state of Georgia, the BRAG-ONC (Biorepository Alliance of Georgia—Oncology).**
- **LCRP collected and sent 43 biospecimens to BRAG-ONC first year and over 70 specimens have been collected so far this year**

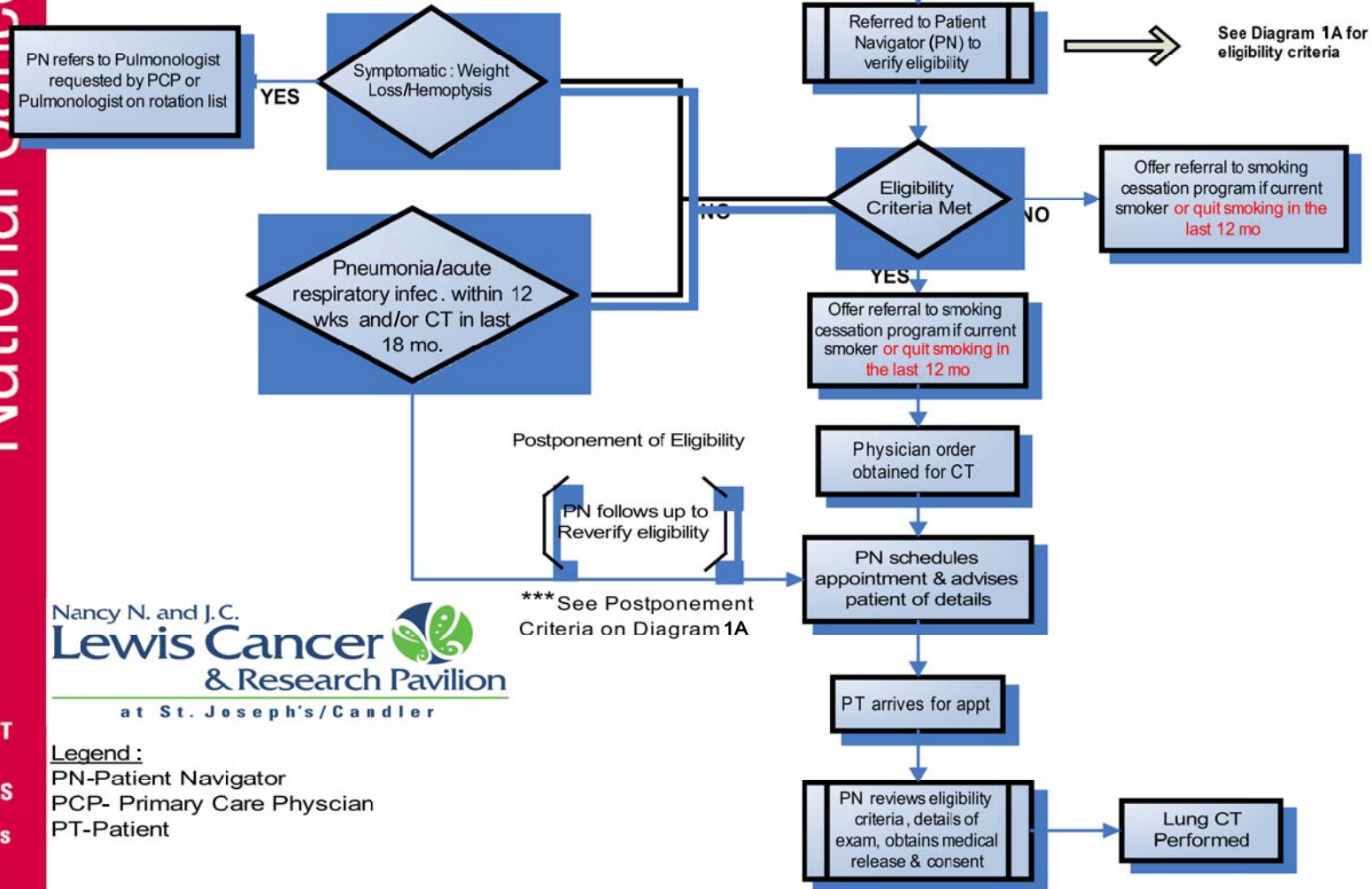
## **NCCCP Sites reported Achievements Clinical Trials**

- **NCCCP goal to expand clinical trials.**
- **LCRP increased physician investigators by 20%**
- **LCRP increased number of clinical trial nurses and patient navigators.**
- **LCRP incorporated patient navigators and lay navigators in clinical research meetings and training.**
- **LCRP increased clinical trial availability by 60% .**

## Evaluation of Lung Cancer Screening Program and Patient Navigation in a Community Cancer Center: A time to treatment study.

- In 2004, Lung cancer claimed more than one-fourth of the lives lost to cancer
- One of the most promising lung cancer screening modalities is non-contrast, low dose Computed Tomography (CT).
- CT is not standard of care for lung cancer screening outside of a clinical trial
- NCCN guidelines recommend that high risk individuals participate in a clinical trial evaluating CT screening
- LCRP site-initiated Evaluation of Lung Cancer Screening Program and Patient Navigation in a Community Cancer Center: A time to treatment study

**Lung Screening Referral Process  
DIAGRAM 1**



Nancy N. and J.C.  
**Lewis Cancer & Research Pavilion**  
at St. Joseph's/Candler

**Legend :**  
PN- Patient Navigator  
PCP- Primary Care Physician  
PT- Patient

## **NCCCP Sites reported Achievements Quality of Care**

- The NCCCP quality of care initiative involves what quality cancer care looks like, which patients are more likely to receive poor quality care, and way to measure health care quality.
- LCRP Cancer registrars achieved “real time” abstracting of top major sites( breast, lung and colorectal) for both “real-time” data collection as well as participation in the Commission on Cancer’s “rapid quality reporting system” (RQRS).
- LCRP initiated multi-disciplinary virtual treatment planning and evaluation evolved to include “Face to Face” clinics for complex diagnoses and situations, i.e., Latino breast cancer patient needing multi-disciplinary evaluation was seen by the surgeon, medical oncologist, radiation oncologist, plastic surgeon and clinical research coordinator in the multi-disciplinary clinic at the same time along with the interpreter

## **NCCCP Sites reported Achievements Information Technology**

- **NCCCP goal to explore the utility of a national database of electronic medical records.**
- **LCRP set in place the foundation for the NCIA product and caBIG**
- **LCRP participating in ASCO EHR initiative**
- **LCRP implementing the Meditech Oncology Module for the electronic integration of cancer data and clinical information with the system wide EHR--Meditech**

# **NCCCP Sites reported Achievements**

## **Communications Subcommittee**

- **NCCCP Communications subcommittee purpose is community awareness of the goals and benefits of the NCCCP pilot.**
- **LCRP launched radio spots that announce and describe the NCCCP at the Lewis Cancer & Research Pavilion (LCRP).**
- **LCRP involved with Buddy Check 3 (breast cancer awareness) runs monthly and updates regarding the NCCCP are included.**

# **NCCCP Sites reported Achievements Advocacy**

- NCCCP sites encouraged to work within their respective communities to assist with the comprehensive pilot goals.
- LCRP Oncology Outreach Coordinator was inducted into the local Komen Affiliate board of directors, Coastal Georgia.
- LCRP worked closely with Black Entertainment Television network to offer a women's health symposium at Savannah State University
- LCRP partnered with Savannah Morning News and Comcast to raise breast cancer awareness through a month long campaign called "Paint the Town Pink"

## **Future directions of NCCCP Pilot Sites**

- How innovative integrated models for multi-specialty care may improve care to cancer patients.
- How different models for effective linkages between NCCCP sites and NCI-designated cancer centers may enhance the care and clinical trials provided in community-based cancer centers and enable appropriate referrals for more complex care.
- How an NCCCP program may benefit from program linkages or cooperative efforts with state or other publicly-sponsored cancer programs